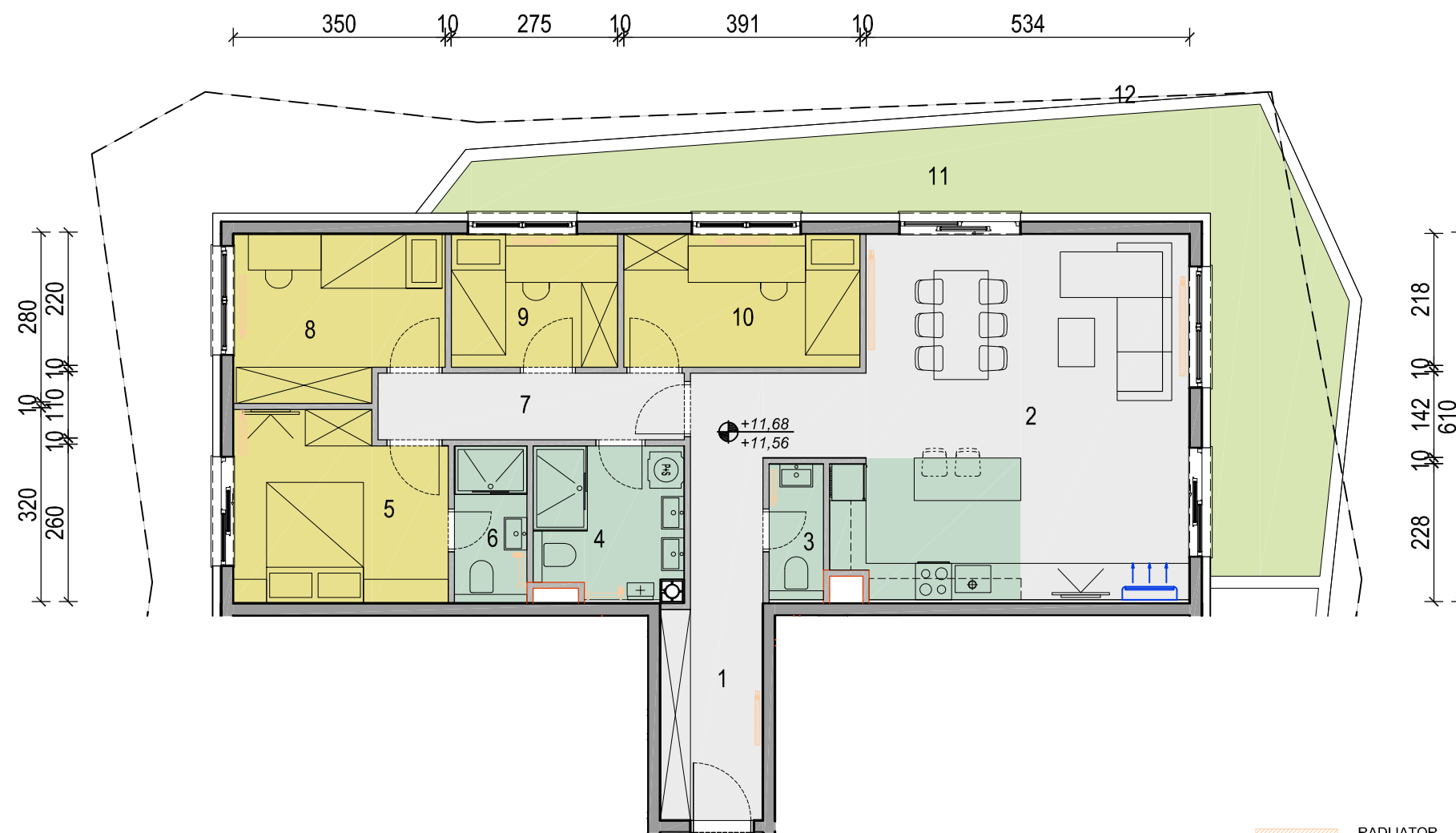


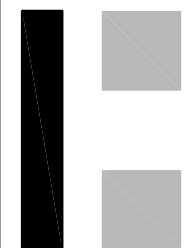
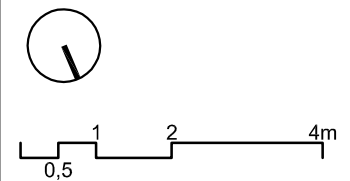
**STAN: A402**  
 Etaža: 4  
 Površina: 112,48m<sup>2</sup>  
 Broj soba: 5  
 Orientacija: IJZ

VIŠESTAMBENA GRAĐEVINA; Velika Gorica, A.K. Miošića



**STAN A402**

RADIJATOR      KLIMA      PERILICA RUBLJA



Oznaka	Prostorija	Pod	Površina	Koef	Ukupno
01	Ulaz	parket	12,98 m <sup>2</sup>	1	12,98 m <sup>2</sup>
02	Kuhinja, blag i d.bor.	parket/ker. Pl.	33,65 m <sup>2</sup>	1	33,65 m <sup>2</sup>
03	Wc	ker. pločice	2,02 m <sup>2</sup>	1	2,02 m <sup>2</sup>
04	Hodnik	parket	5,56 m <sup>2</sup>	1	5,56 m <sup>2</sup>
05	Soba 1	parket	10,60 m <sup>2</sup>	1	10,60 m <sup>2</sup>
06	Kupaonica S1	ker. pločice	3,12 m <sup>2</sup>	1	3,12 m <sup>2</sup>
07	Kupaonica	ker. pločice	5,97 m <sup>2</sup>	1	5,97 m <sup>2</sup>
08	Soba 2	parket	9,07 m <sup>2</sup>	1	9,07 m <sup>2</sup>
09	Soba 3	parket	6,05 m <sup>2</sup>	1	6,05 m <sup>2</sup>
10	Soba 4	parket	8,58 m <sup>2</sup>	1	8,58 m <sup>2</sup>
<b>UKUPNO</b>			<b>97,60 m<sup>2</sup></b>		<b>97,60 m<sup>2</sup></b>
11	Natkriveni balkon	ker. Pločice	29,75 m <sup>2</sup>	0,50	14,88 m <sup>2</sup>
<b>SVEUKUPNO</b>			<b>127,35 m<sup>2</sup></b>		<b>112,48 m<sup>2</sup></b>