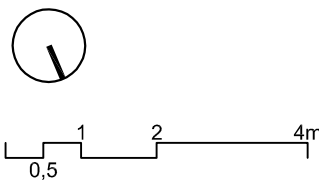
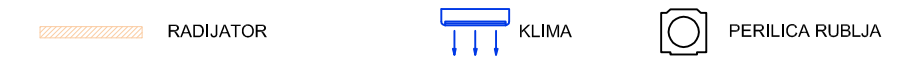
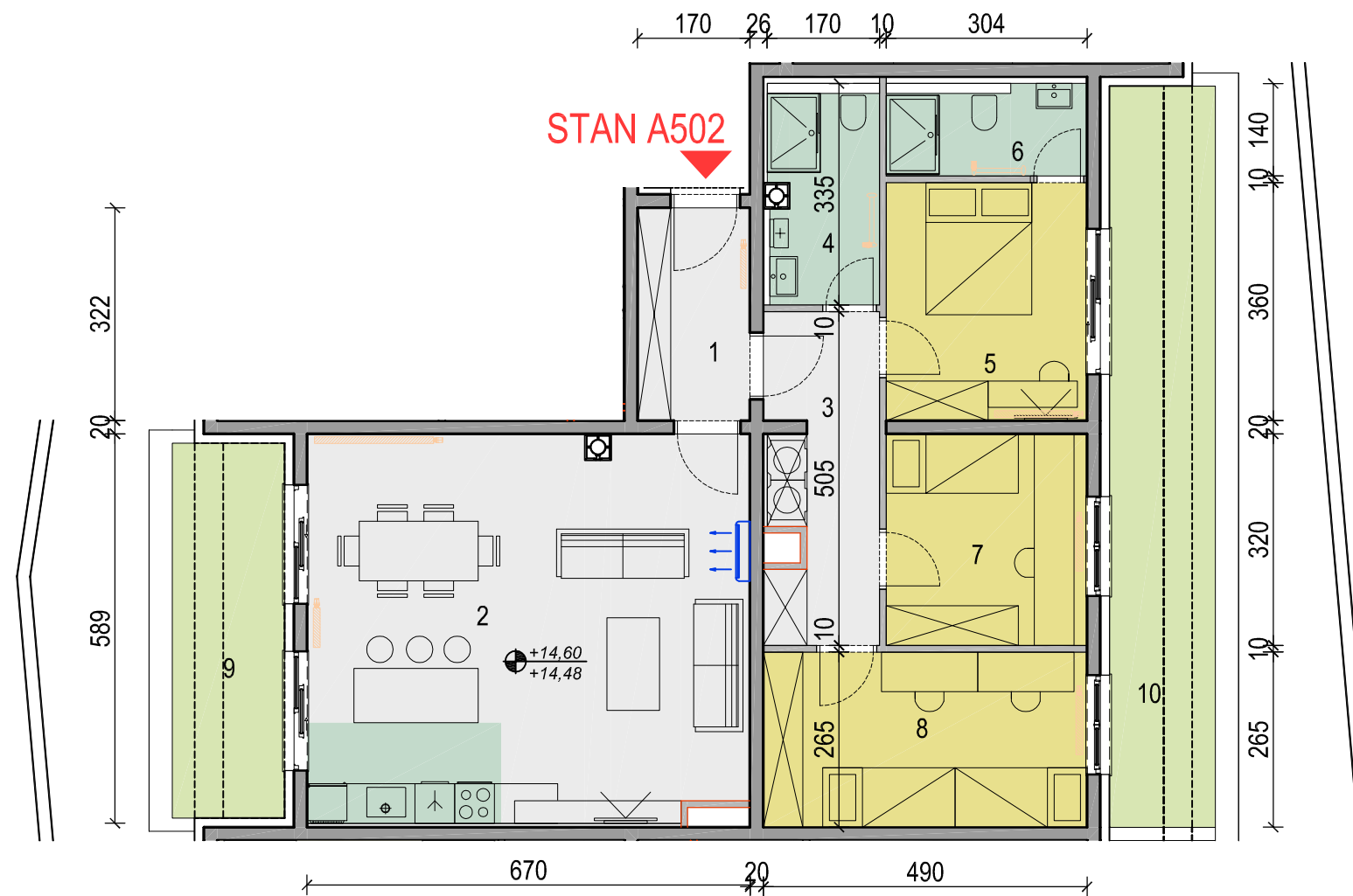


**STAN: A502**  
 Etaža: Uv. Etaža  
 Površina: 102,49m<sup>2</sup>  
 Broj soba: 4  
 Orientacija: IZ

VIŠESTAMBENA GRAĐEVINA; Velika Gorica, A.K. Miošića



iHUDAN arhitektura doo  
 Gajeva 33, 10410 Velika Gorica

STAN A502	Oznaka	Prostorija	Pod	Površina	Koef	Ukupno
	01	Ulaz	parket	5,47 m <sup>2</sup>	1	5,47 m <sup>2</sup>
	02	Kuhinja, blag i d.bor.	parket/ker. Pl.	39,00 m <sup>2</sup>	1	39,00 m <sup>2</sup>
	03	Hodnik	parket	8,24 m <sup>2</sup>	1	8,24 m <sup>2</sup>
	04	Kupaonica	ker. pločice	5,25 m <sup>2</sup>	1	5,25 m <sup>2</sup>
	05	Soba 1	parket	10,94 m <sup>2</sup>	1	10,94 m <sup>2</sup>
	06	Kupaonica S1	ker. pločice	3,97 m <sup>2</sup>	1	3,97 m <sup>2</sup>
	07	Soba 2	parket	9,73 m <sup>2</sup>	1	9,73 m <sup>2</sup>
	08	Soba 3	parket	12,99 m <sup>2</sup>	1	12,99 m <sup>2</sup>
	<b>UKUPNO</b>				<b>95,59 m<sup>2</sup></b>	
09	Nenatkrivena terasa	ker. pločice	9,64 m <sup>2</sup>	0,25	2,41 m <sup>2</sup>	
10	Nenatkrivena terasa	ker. pločice	17,94 m <sup>2</sup>	0,25	4,49 m <sup>2</sup>	
<b>SVEUKUPNO</b>				<b>123,17 m<sup>2</sup></b>		<b>102,49 m<sup>2</sup></b>