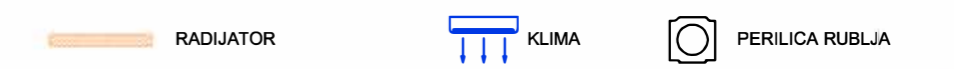
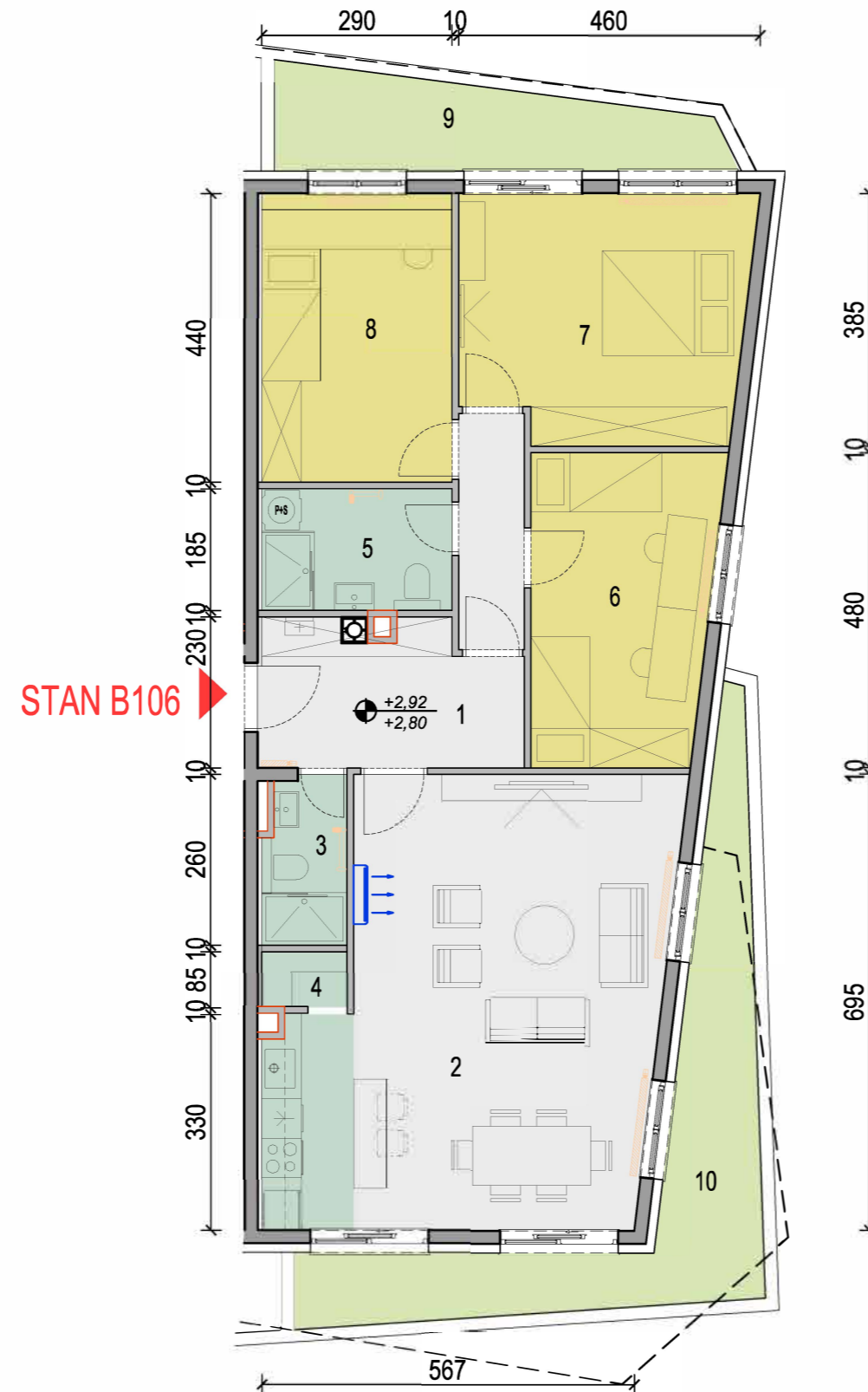


**STAN: B106**  
 Etaža: 1  
 Površina: 112,76m<sup>2</sup>  
 Broj soba: 4  
 Orijentacija: ISZ

VIŠESTAMBENA GRAĐEVINA; Velika Gorica, A.K. Miošića



Oznaka	Prostorija	Pod	Površina	Koef	Ukupno
01	Ulaz/Hodnik	parket	11,94 m <sup>2</sup>	1	11,94 m <sup>2</sup>
02	Kuhinja, blag i d.bor.	parket/ker. Pl.	37,12 m <sup>2</sup>	1	37,12 m <sup>2</sup>
03	Wc	ker. pločice	3,16 m <sup>2</sup>	1	3,16 m <sup>2</sup>
04	Gospodarstvo	ker. pločice	1,12 m <sup>2</sup>	1	1,12 m <sup>2</sup>
05	Kupaonica	ker. pločice	5,08 m <sup>2</sup>	1	5,08 m <sup>2</sup>
06	Soba 1	parket	12,90 m <sup>2</sup>	1	12,90 m <sup>2</sup>
07	Soba 2	parket	16,13 m <sup>2</sup>	1	16,13 m <sup>2</sup>
08	Soba 3	parket	13,32 m <sup>2</sup>	1	13,32 m <sup>2</sup>
<b>UKUPNO</b>			<b>100,77 m<sup>2</sup></b>		<b>100,77 m<sup>2</sup></b>
09	Natkriveni balkon	ker. pločice	8,61 m <sup>2</sup>	0,50	4,31 m <sup>2</sup>
10	Natkriveni balkon	ker. pločice	15,37 m <sup>2</sup>	0,50	7,69 m <sup>2</sup>
<b>SVEUKUPNO</b>			<b>124,75 m<sup>2</sup></b>		<b>112,76 m<sup>2</sup></b>

