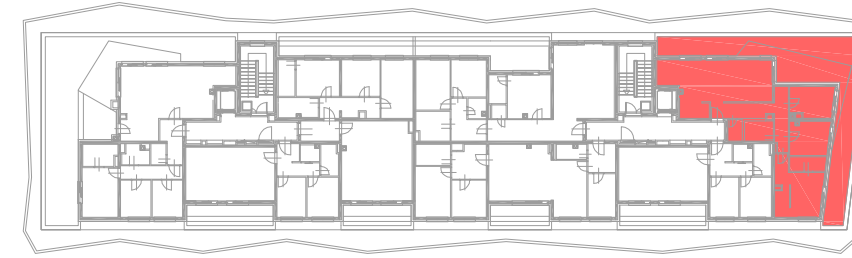
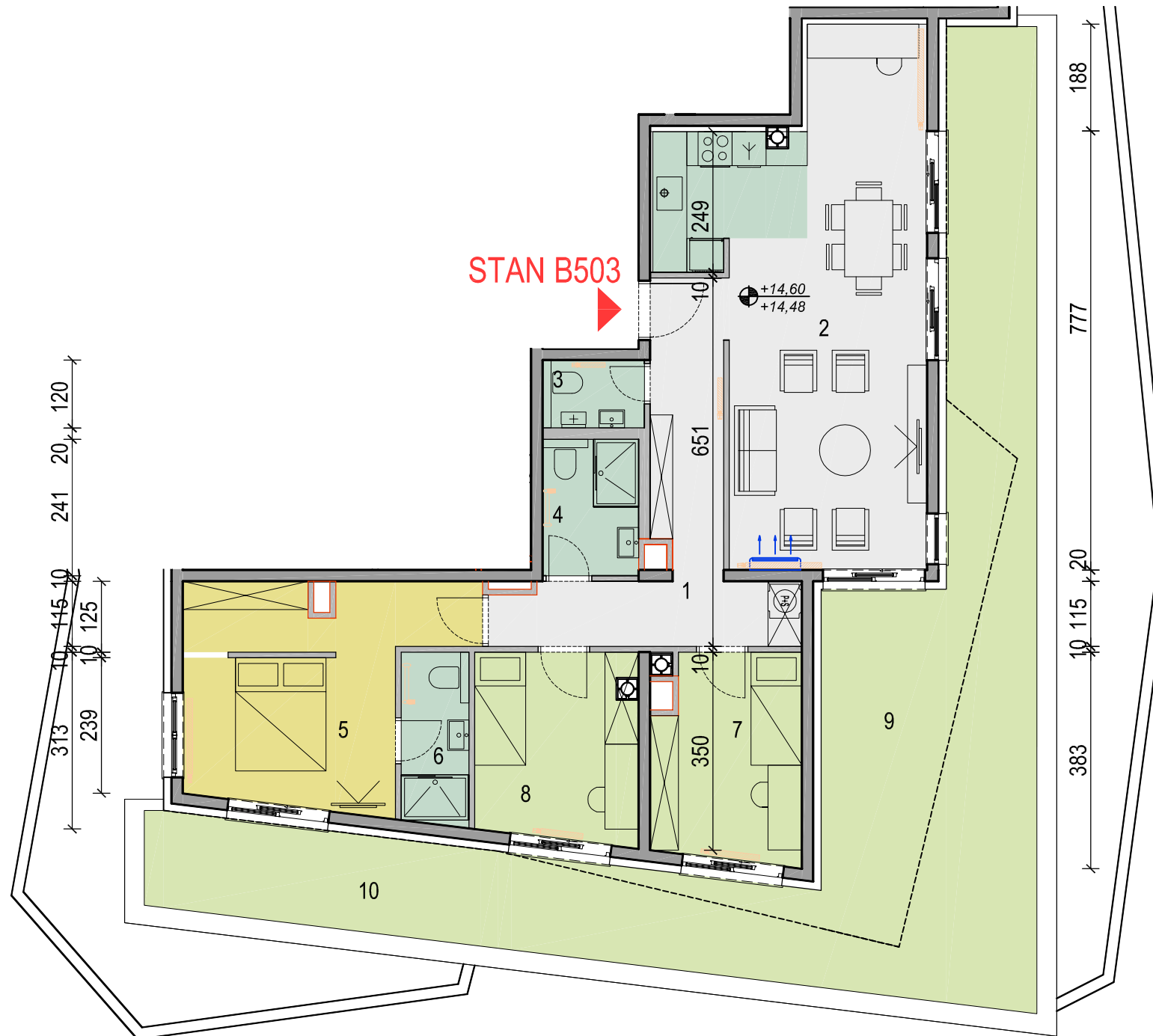
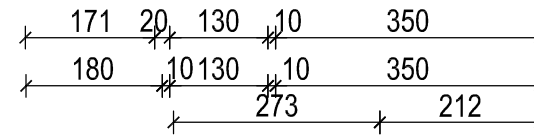


**STAN: B503**

Etaža: Uv.Etaža  
 Površina: 114,06m<sup>2</sup>  
 Broj soba: 4  
 Orijehtacija: ISZ



VIŠESTAMBENA GRAĐEVINA; Velika Gorica, A.K. Miošića



 RADIJATOR

 KLIMA

 PERILICA RUBLJA

Oznaka	Prostorija	Pod	Površina	Koef	Ukupno
01	Ulaz/Hodnik	parket	12,95 m <sup>2</sup>	1	12,95 m <sup>2</sup>
02	Kuhinja, blag i d.bor.	parket/ker. Pl.	35,77 m <sup>2</sup>	1	35,77 m <sup>2</sup>
03	Wc	ker. pločice	2,16 m <sup>2</sup>	1	2,16 m <sup>2</sup>
04	Kupaonica	ker. pločice	4,10 m <sup>2</sup>	1	4,10 m <sup>2</sup>
05	Soba 1 + Gard	parket	16,15 m <sup>2</sup>	1	16,15 m <sup>2</sup>
06	Kupaonica S1	ker. pločice	3,65 m <sup>2</sup>	1	3,65 m <sup>2</sup>
07	Soba 2	parket	9,42 m <sup>2</sup>	1	9,42 m <sup>2</sup>
08	Soba 3	parket	9,28 m <sup>2</sup>	1	9,28 m <sup>2</sup>
<b>UKUPNO</b>			<b>93,48 m<sup>2</sup></b>		<b>93,48 m<sup>2</sup></b>
09	Natkrivena terasa	ker. pločice	18,11 m <sup>2</sup>	0,50	9,06 m <sup>2</sup>
10	Nenatkrivena terasa	ker. pločice	46,08 m <sup>2</sup>	0,25	11,52 m <sup>2</sup>
<b>SVEUKUPNO</b>			<b>157,67 m<sup>2</sup></b>		<b>114,06 m<sup>2</sup></b>

**STAN B503**

